



Bagnall Way | Rugeley | WS15 1SF

£295,000

 **Webbs**
estate agents

Summary

**** POPULAR ESTATE POSITION ** DETACHED FAMILY HOME ** THREE BEDROOMS ** ENSUITE ** OPEN PLAN KITCHEN DINER ** LOUNGE ** DOWNSTAIRS CLOAKROOM ** DRIVEWAY WITH GARAGE ** CLOSE TO AMENITIES ****

WEBBS ESTATE AGENTS are pleased to market this three bedroom detached family home, situated on the ever popular Hawkesyard Estate. The property sits at the bottom of a quiet cul-de-sac. With amenities, schools and useful transport links on your doorstep, it would be ideally suited to a first time buyer. The internal accommodation briefly comprises, entrance hallway, lounge, open plan kitchen dining room, downstairs cloakroom, three bedrooms, ensuite and family bathroom.

Key Features

- POPULAR ESTATE POSITION
- THREE BEDROOMS
- OPEN PLAN KITCHEN DINER
- DOWNSTAIRS CLOAKROOM
- CLOSE TO AMENITIES
- DETACHED FAMILY HOME
- ENSUITE
- LOUNGE
- DRIVEWAY WITH GARAGE
- VIEWING ADVISED

Rooms and Dimensions

Entrance Hallway

Living Room

17'6 x 15'5 (5.33m x 4.70m)

Kitchen/ Living Area

15'5 x 9'4 (4.70m x 2.84m)

WC

Landing

Bedroom 1

11'10 x 10'1 (3.61m x 3.07m)

Ensuite

Bedroom 2

16'0 x 7'6 (4.88m x 2.29m)

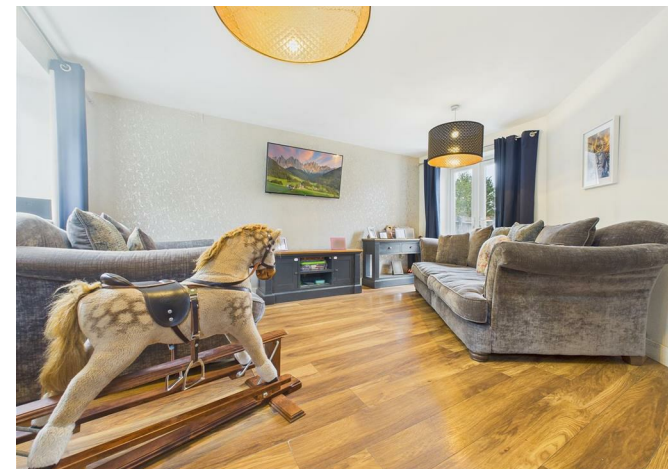
Bedroom 3

10'10 x 7'9 (3.30m x 2.36m)

Bathroom

6'3 x 8'0 (1.91m x 2.44m)

Identification Checks (R)







Webbs Estate Agents - endeavour to maintain accurate depictions of properties in Virtual Tours, Floor Plans and descriptions, however, these are intended only as a guide and purchasers must satisfy themselves by personal inspection.

Globe House Upper Brook Street, Rugeley, Staffordshire, WS15 2DN

Tel: 01889 583377 | Email: rugeley@webbsea.co.uk | www.webbestateagents.co.uk